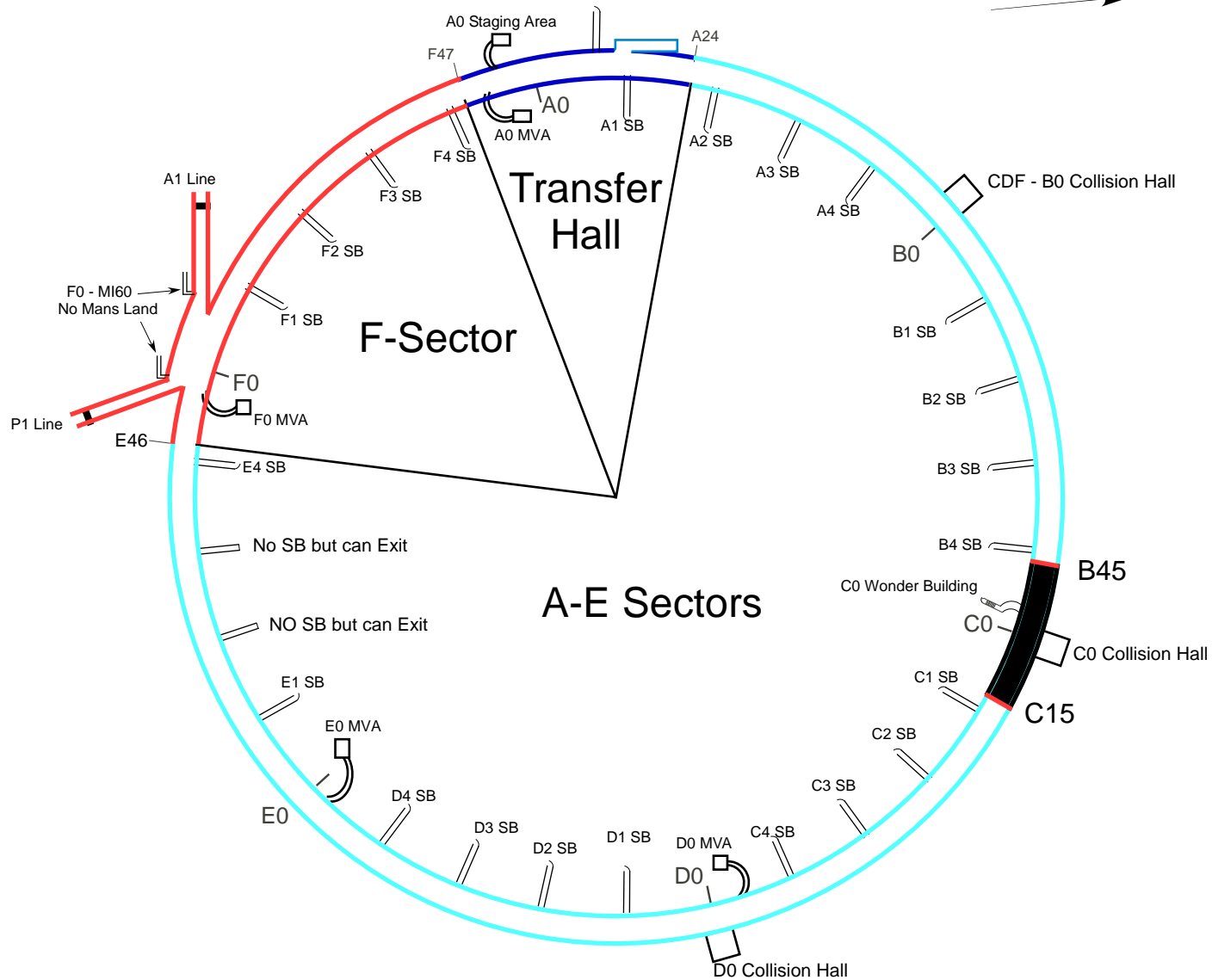


AD Tevatron Overview

Site North



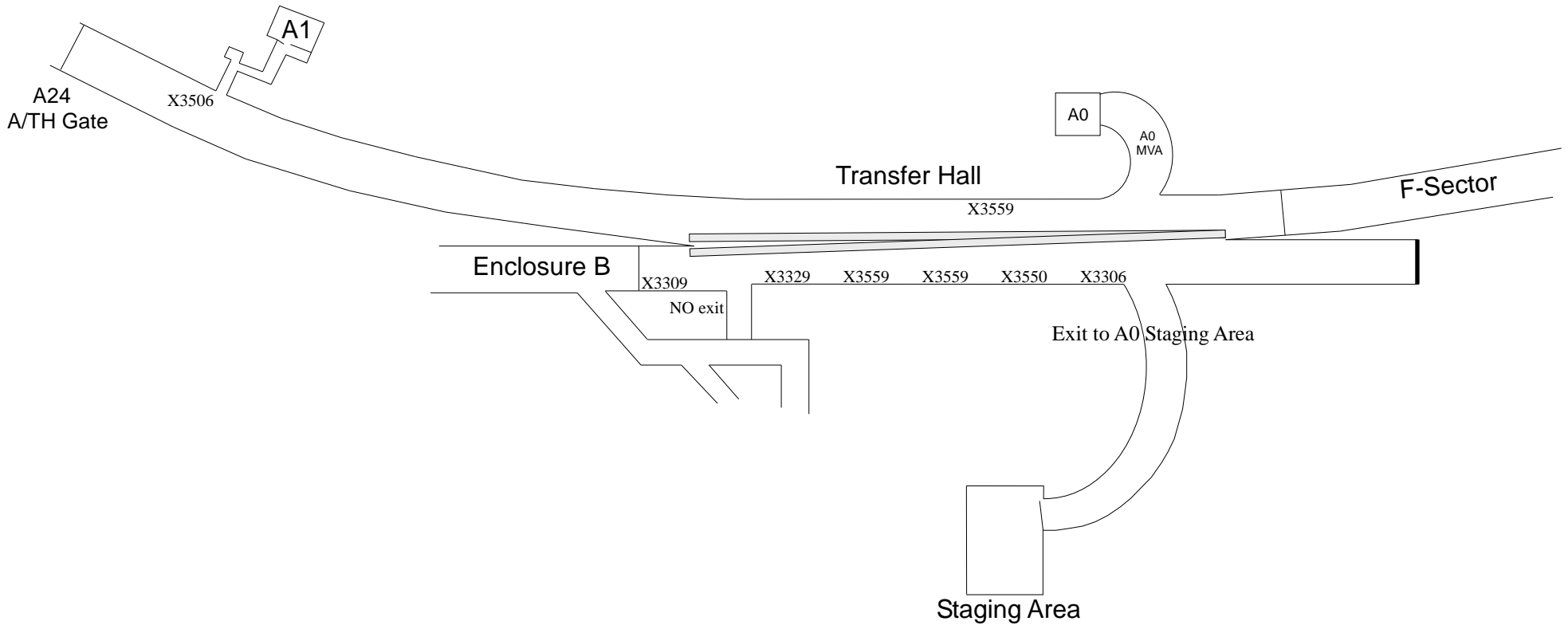
Note: The tunnel from B45 to C15 is a high radiation area and you will need RSO approval and a RHF key to access.

Transfer Hall access requires a Transfer Hall Key

F-Sector access requires a F-Sector key

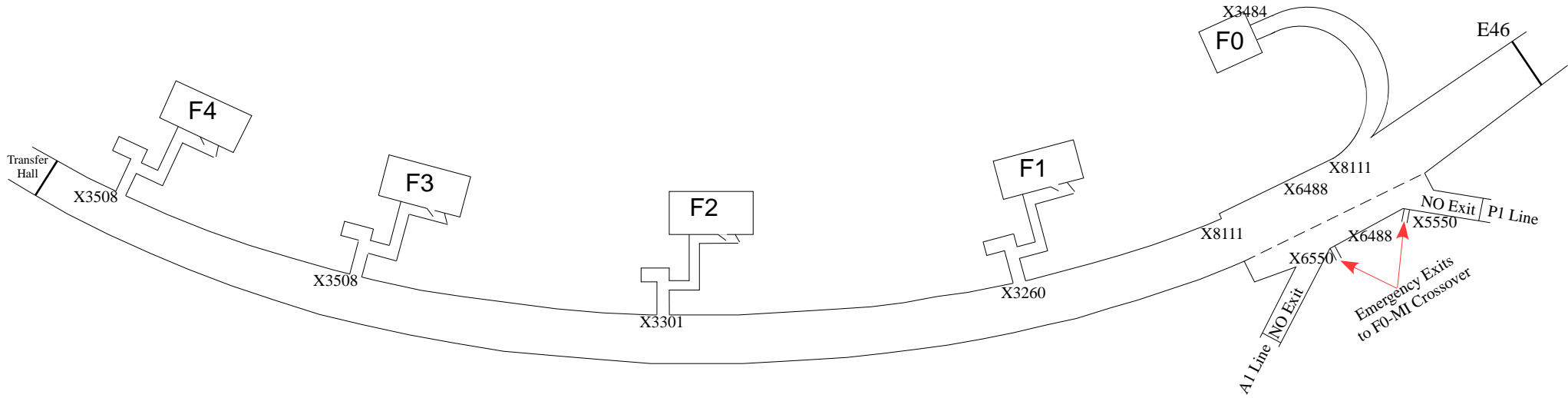
A-E Sectors access requires an A-E Key

AD Enclosure - Transfer Hall



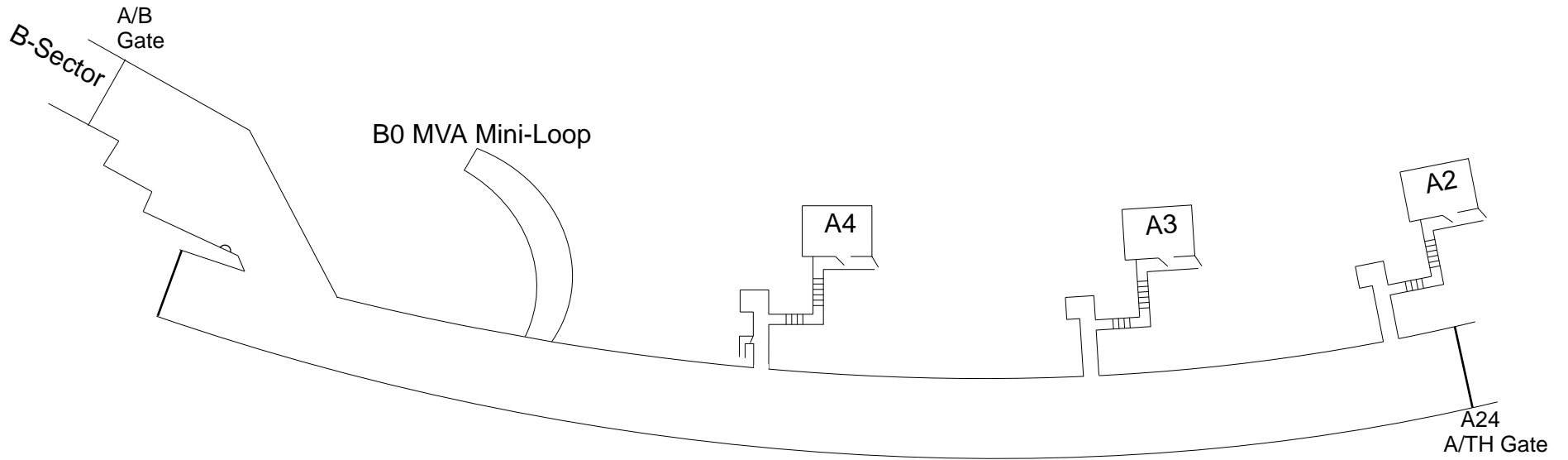
Note: To access the Transfer Hall you will need a Transfer Hall key.

AD Enclosure - F Sector



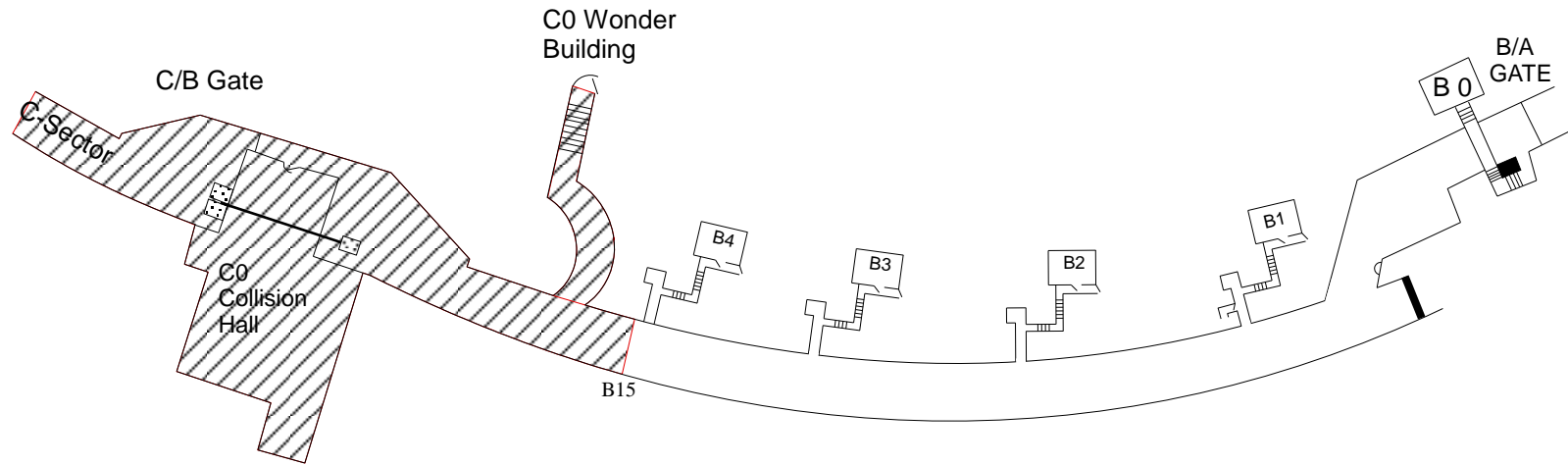
Note: To access the Tevatron F-Sector you will need a F-Sector key.

AD Enclosure - A Sector



Note: To access A-Sector you will need a Tevatron A-E key.

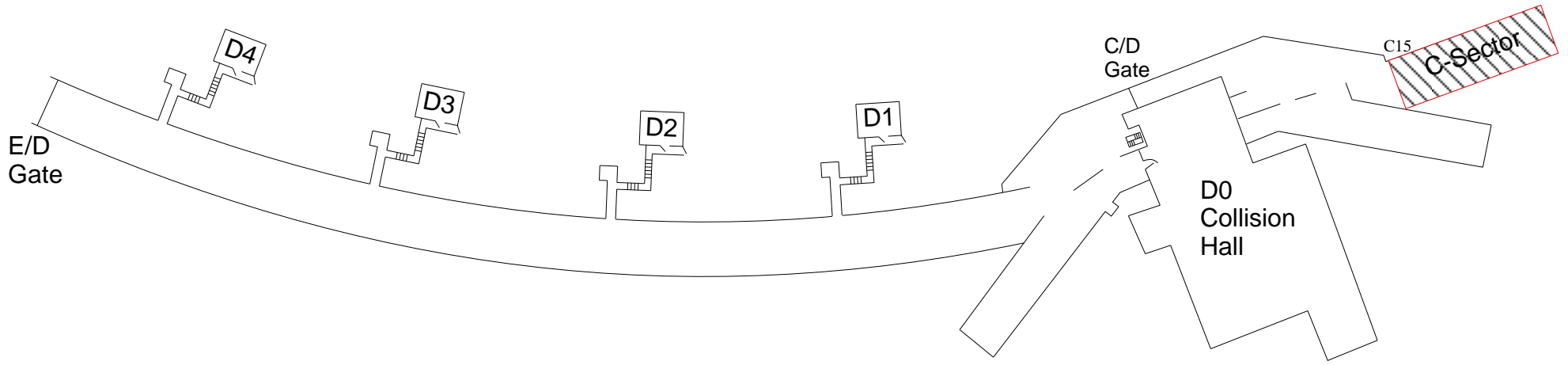
AD Enclosure - B Sector



Note: Access requires a Tevatron A-E key.

B45 to C15 is a High Radiation area, you will need RSO approval and a RHF key to enter.

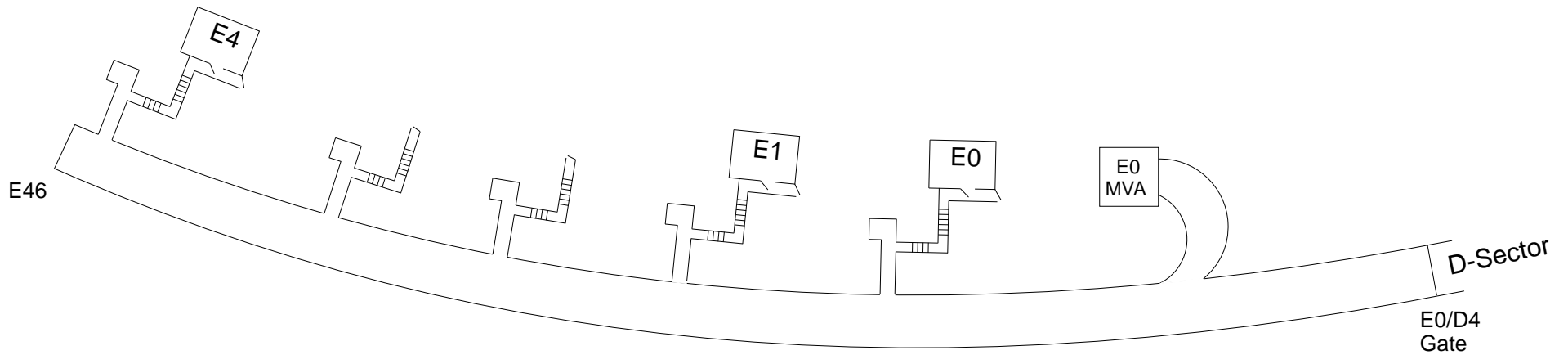
AD Enclosure - D Sector



Note: To access the Tevatron D-Sector you will need a Tevatron A-E key.

B45 to C15 is a High Radiation area, you will need RSO approval and a RHF key to enter.

AD Enclosure - E Sector



The E2 and E3 service building have been removed, but you still can exit through the stairwells, or through D-Sector or F-Sector.

Note: To access E-Sector you will need a Tevatron A-E key